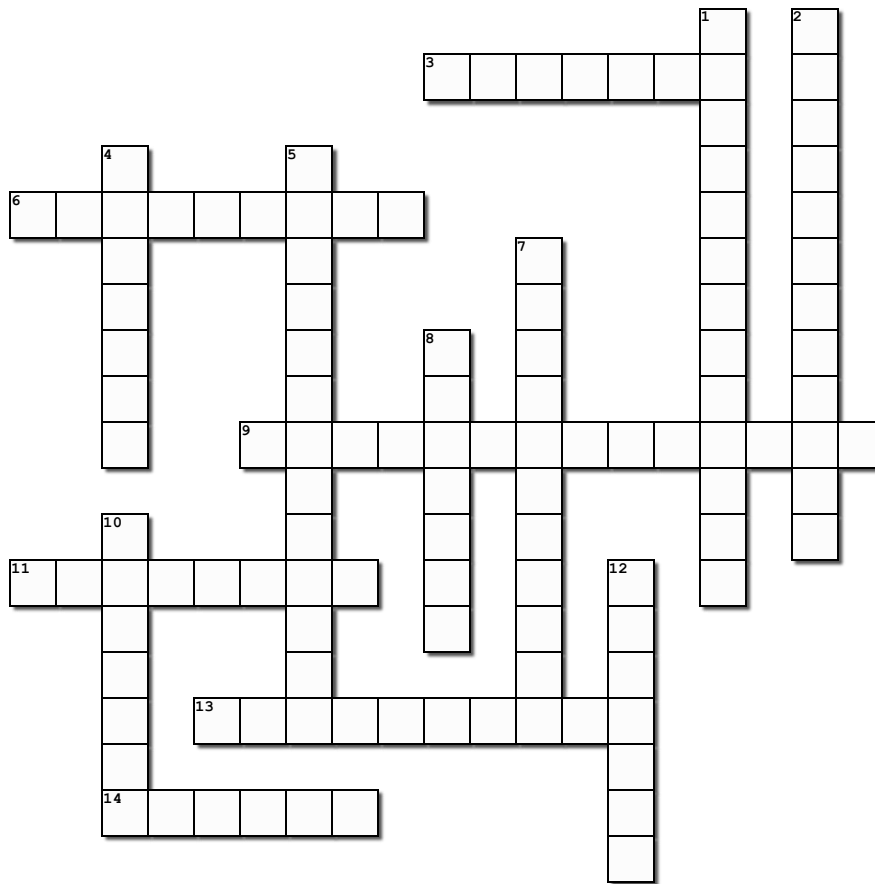
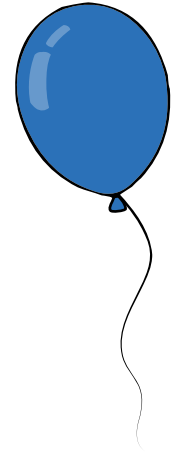
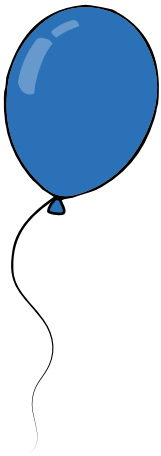


Blue Balloon Crossword



Across

3. Before someone is diagnosed with type 1 diabetes, they might be feeling this a lot.
6. This tasty treat can also be used to help someone when their glucose levels are too low.
9. This is the name for a high glucose level, usually defined as 10mmol/L or more.
11. This organ should release insulin, which allows the glucose to enter cells.
13. A device which delivers insulin by injection. Some are prefilled with insulin and are disposable.
14. A device that is worn by someone to read glucose levels and can be scanned with a reader or phone.

Down

1. This is the name for a low glucose level, usually defined as 3.9mmol/L or less.
2. The process by which the body develops antibodies (like when fighting an infection) but they are directed against some part of the body's own tissues.
4. A simple sugar that is absorbed through the gut and is an essential energy source for the body.
5. The main source of energy that comes from healthy foods such as bread, pasta, milk and fruit.
7. A device which delivers insulin through a small tube placed under the skin.
8. A chemical which is made and stored in a particular part of the body (insulin is an example of this).
10. If someone's glucose levels are too low, they might feel like this.
12. The small tube inserted in the skin to deliver insulin via a pump.

Across: 3.Thirsty, 6.JellyBaby, 9.Hyperglycaemia, 11.Pancreas, 13.InsulinPen, 14.Sensor. Down: 1.Hypoglycaemia, 2.Auto-immunity, 4.Glucose, 5.Carbohydrates, 7.InsulinPump, 8.Hormone, 10.Anxious, 12.Cannula.