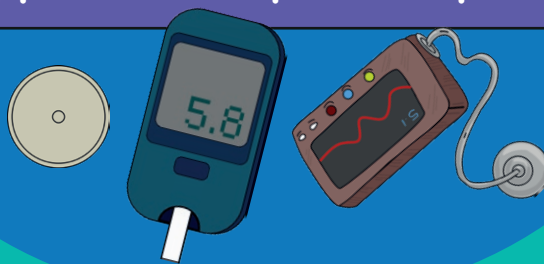
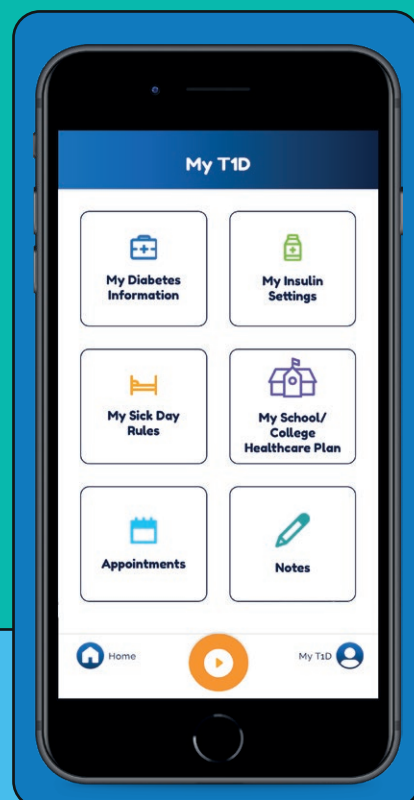
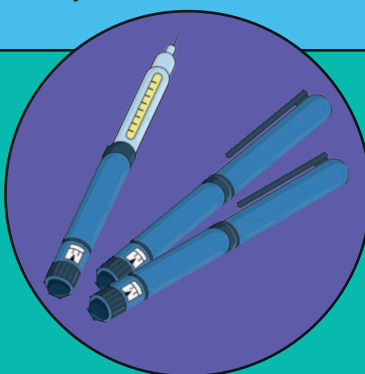


Tips For Failing Tech

If you have any issues with your tech
Contact your tech supplier and they will instruct you on
what happens with repair or replacement.



Make sure you have injection supplies for back up
by ordering them every now and again with your
repeat prescription



Store your insulin ratios in
the My T1D area of the
DigiBete App.

Contact your Diabetes nurse if you need any help
with calculating the right amount of insulin to give if
you need to go back to injections while your tech is
being sorted out.

