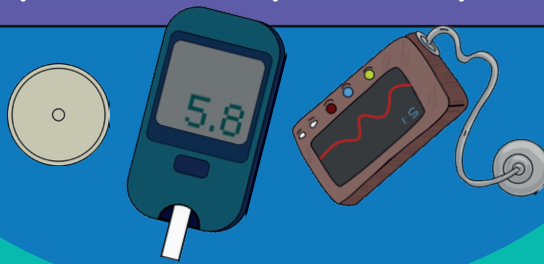
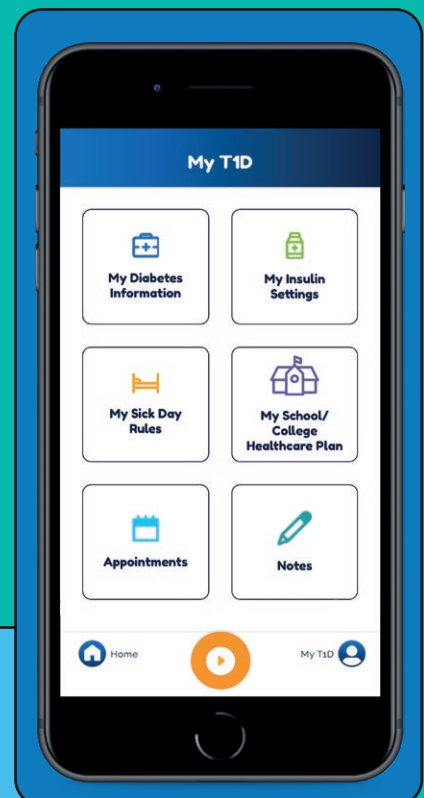
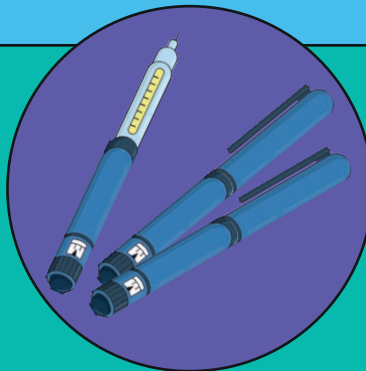


Tips For Failing Tech

If you have any issues with your tech
Contact your tech supplier and they will instruct you on what happens with repair or replacement.



Make sure you have injection supplies for back up by ordering them every now and again with your repeat prescription



Store your insulin ratios in the My T1D area of the DigiBete App.

Contact your Diabetes nurse if you need any help with calculating the right amount of insulin to give if you need to go back to injections while your tech is being sorted out.

